

# clever



## 20 Woodland Terrace, Flat 6

, Plymouth, PL4 8NL

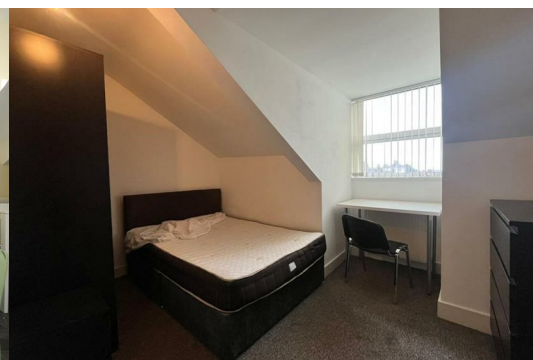
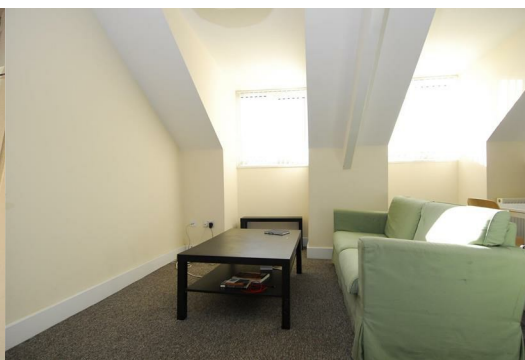
**£261 Per week**



Great 1-bedroom apartment, perfect for a couple or a single student looking to live on their own. Graduate suitable too, as it is in a more residential area, perfect for those looking to live independently.

The property has a large kitchen/lounge which is open plan, making a great social space. Located on Woodland Terrace, just minutes from local shopping and social areas and less than 5 minutes to Plymouth Business School and University Campus. It also benefits from being close to main bus routes for the Marjon Campus, Hospital and City College.

£230 per week based on 44 week tenancy  
Student property- Available 1st September  
Gas, electric water and WIFI included! (fair usage policy applies)  
Council tax band A



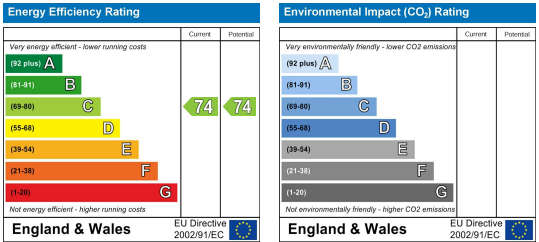
Area Map



Floor Plans



Energy Efficiency Graph



These particulars, whilst believed to be accurate are set out as a general outline only for guidance and do not constitute any part of an offer or contract. Intending purchasers should not rely on them as statements of representation of fact, but must satisfy themselves by inspection or otherwise as to their accuracy. No person in this firms employment has the authority to make or give any representation or warranty in respect of the property.